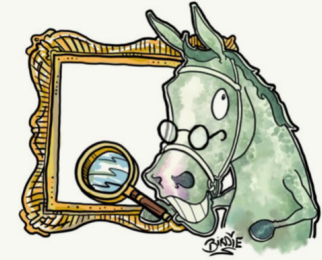
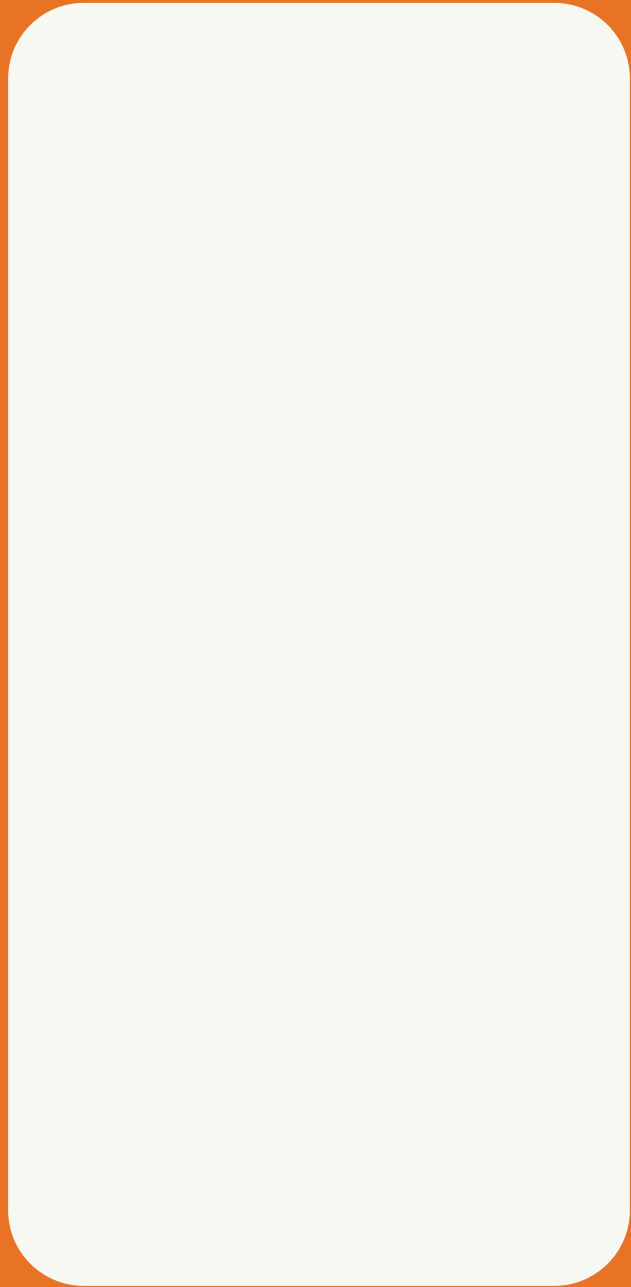


NOTES & SKETCHES



SURPRISING SCIENCE MEGA TRAIL

Use the plan on the back and
the key inside to help you
explore

National Horse Racing Museum

For more information about activities and what's
on, visit www.nhrm.co.uk



AM I LIKE A HORSE?

Pick up the models of the heart and brain.
What's the difference between you and a racehorse?

Look at the leg bones of a horse and a human. How are they different?

A horse has 205 bones and we have 206.
Click on Comparative Anatomy to see where they are.

TRUE OR FALSE?
Horses can sleep standing up.
Horses have almost 360° vision.

We measure the height of a horse in hh (hands high). Stand next to the measure - how many hh are you?

HOW DO HORSES MOVE?

People used to think that horses looked like this when they galloped.



Can you find horses with stretched out legs like this in the paintings?

George Stubbs painted more life-like pictures of horses.
Can you find his paintings and his book?

Eadweard Muybridge was a photographer. Through his photos he discovered how horses move. Look through the zoetrope and you can find out too.

Watch the film to find out more about how horses move.

If there's time, watch a demonstration on our racehorse simulator.

LOOK AT A HORSE INSIDE AND OUT!

Who was Pot8os?

Have a look at the two films of operations on horses. What differences can you see?

What do horses eat?

Visit the horses in the Rothschild Yard and ask staff how they care for them.

Watch the short film of the farrier at work.

KEY

Trainer's House

Palace House

King's Yard Galleries

Rothschild Yard